

Linwood Avenue Unit 2, 218 Linwood Avenue

AFFORDABLE RETAIL/OFFICE



Additional
first floor space
of 75sqm also
available

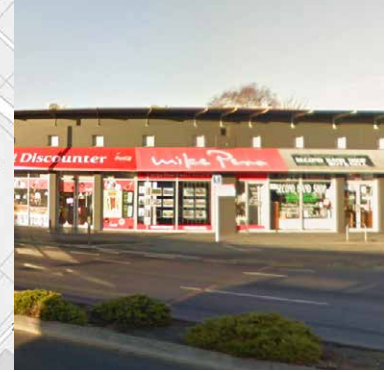
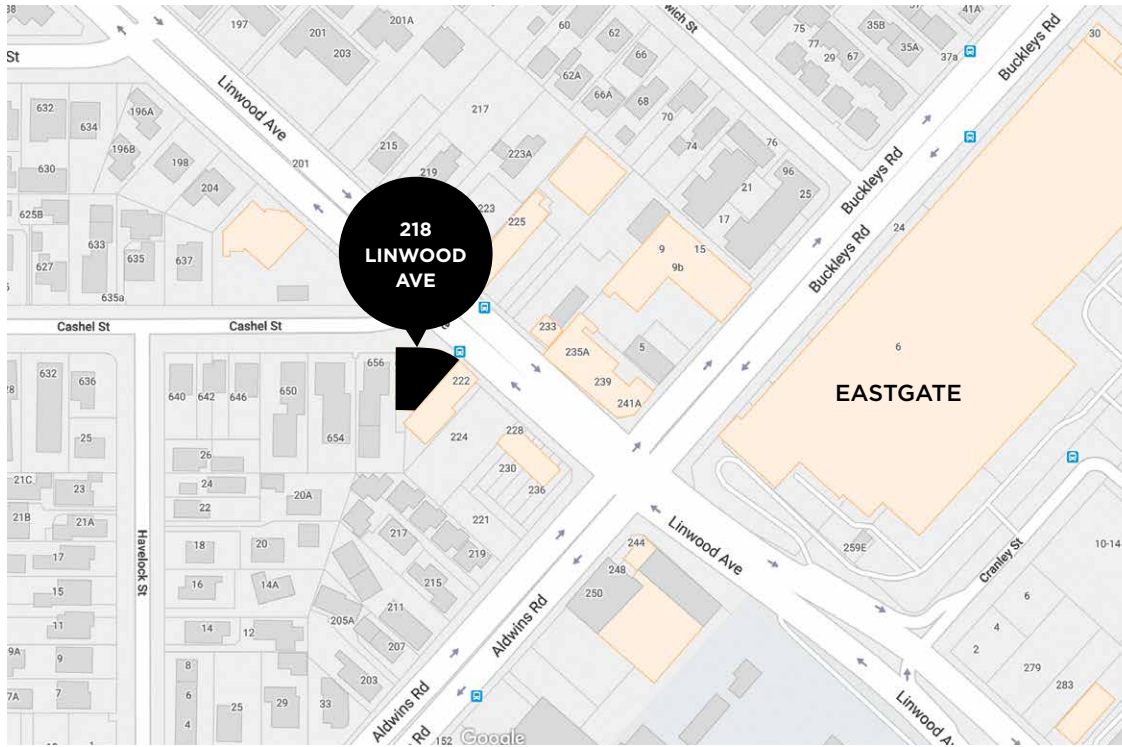


Situated on the corner of Linwood Avenue and Cashel Street is this affordable retail/office space.

It includes a common apportionment with excellent shared facilities. The space is well decorated and has the benefit of air-con, burglar alarm, fire system and surveillance cameras.

Adjacent to this building is the Eastgate Shopping Mall and Burger King.

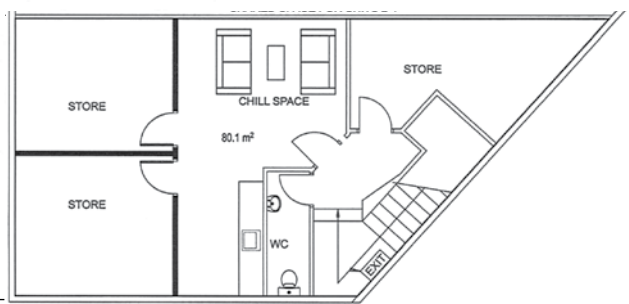
Enquire today
021 899 623



CASHEL STREET



LEVEL 1



- Linwood Avenue**
- 218 Linwood Avenue**
- Area M²**
- 100.41 incl. common share**
- Rental Net P.A. + GST**
- \$17,500.00**
- Opex incl. Rates Net P.A. + GST**
- Approx. \$7,555.00**
- Including common ablutions**

Enquiries:

Shaun Stockman 03 977 4986 021 899 623 shaun@kpistockman.co.nz
Rachel Stockmann 03 977 4986 022 592 6688 rachel@kpistockman.co.nz
stockmangroup.co.nz

Creating spaces for people

