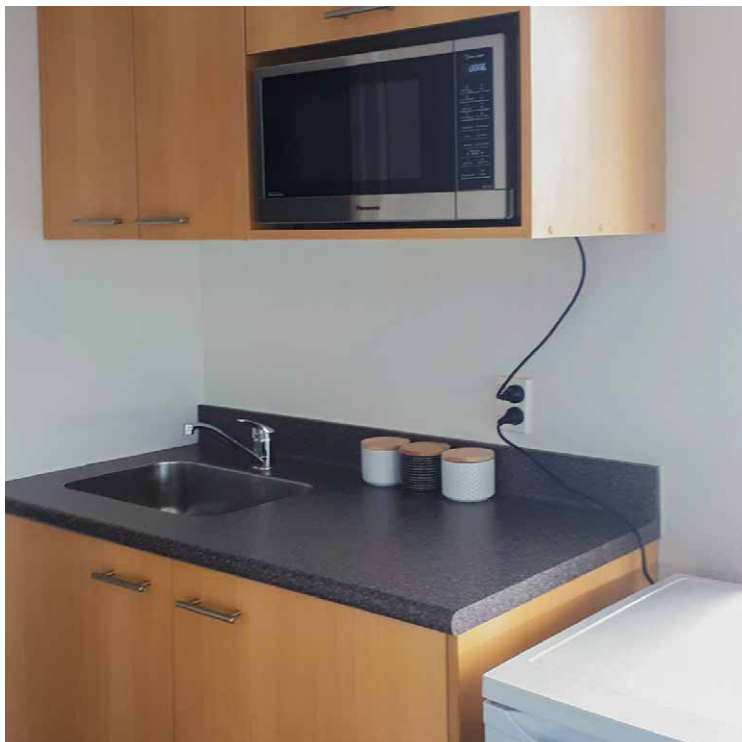


Burdale Business Centre 2/7 Burdale Street

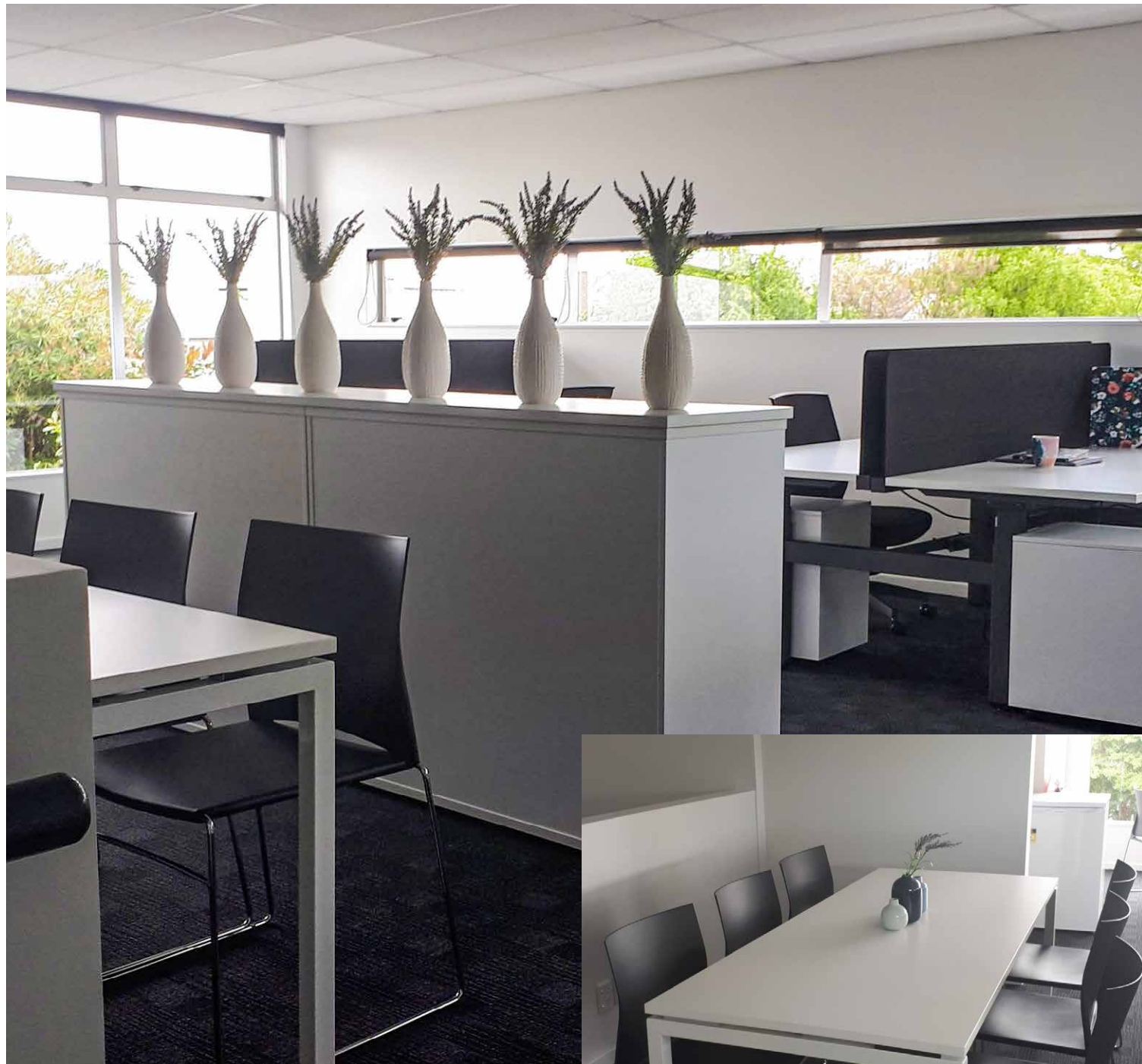


Appealing front facing, first floor office in very popular architecturally designed 8-unit complex.

Situated just off Mandeville Street and close to Riccarton Mall, en-route to both Blenheim Road and Moorhouse Ave.

This unit is fully furnished with 5 work stations and is fitted with modern carpet tiles and décor. It offers a security alarm, heatpump, shade blinds and good toilet and kitchen facilities with one onsite carpark. This office had the benefit of a meeting area.

**Enquire today
021 899 623**



Burdale Business Centre

Ground Unit 2, 7 Burdale St.

Area M²

50.0

Rental Gross Weekly + GST

\$485.00

Per Car Park

Included - two

Body Corp

Included

Rates

Included

Enquiries:

Rachel Stockman

03 977 4986

022 592 6688

rachel@kpistockman.co.nz

Shaun Stockman

03 977 4986

021 899 623

shaun@kpistockman.co.nz

stockmangroup.co.nz