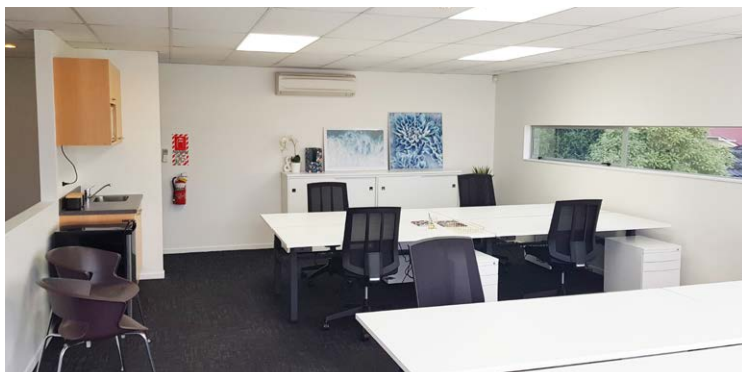


# Burdale Business Centre 7/7 Burdale Street



**Appealing first floor office in very popular architecturally designed 8-unit complex with leafy views.**

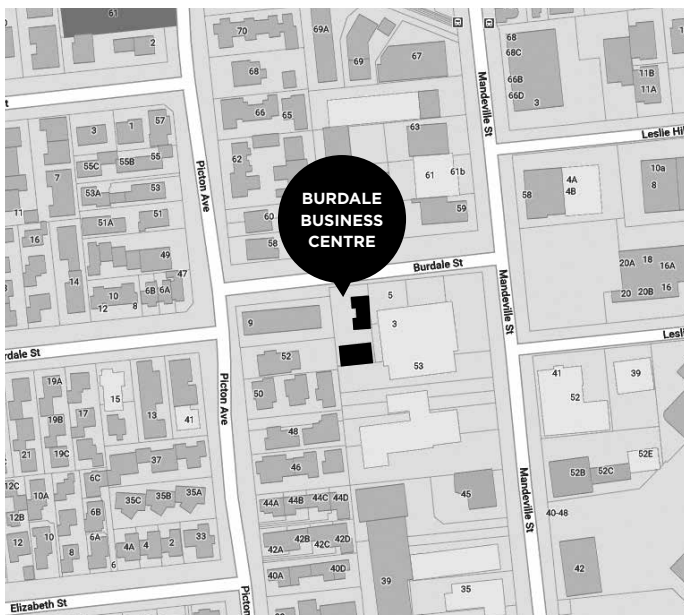
Situated just off Mandeville Street and close to Riccarton Mall, en-route to both Blenheim Road and Moorhouse Ave. Close by is the Decant Vintners & Epicures complete with its fine wine selection and café.

This unit is fully furnished with 8 work stations and is fitted with modern carpet tiles and décor. It offers a security alarm, heatpump, shade blinds, and good toilet and kitchen facilities, with one onsite carpark.

**Enquire today**  
**021 899 623**  
**[stockmangroup.co.nz](http://stockmangroup.co.nz)**







## Burdale Business Centre

Unit 7, 7 Burdale Street

Area M<sup>2</sup>

50

Rental Gross Weekly + GST

\$460.00

Per Car Park

Included

Body Corp

Included

Rates

Included

Enquiries:

Shaun Stockman

03 977 4986

021 899 623

shaun@kpiStockman.co.nz

stockmangroup.co.nz