

225 - 227 High Street, Christchurch

Boutique Individual Secure Offices

above  Bonnington
your space

aboveyourspace.co.nz

spaces for people


Stockman
Group Limited



CAFE

abovo your space

LIBBY &
THE CREATIVE AGENCY

225a

CAFE

225a

CAFE

225a

CAFE

225a

CAFE

225a

CAFE

225a

CAFE

225a

CAFE

225a

CAFE

225a

CAFE

225a

CAFE

225a

CAFE

225a

CAFE

225a

CAFE

225a

CAFE

225a





Momentum in the Retail Precinct is Strong

By late 2018, the Retail Precinct will be a dynamic office and retail district.

The completion of The Crossing development with its retail tenants and office workers along with the existing Ballantynes, Hallenstein Glasson, BNZ Centre and ANZ Centre will inject life and energy into this part of the city.



Top Left: H&M Christchurch
Top Right: Strange's Lane
Centre: The Crossing
Bottom Left: BNZ Cashel Mall



STRANGE&CO

LOWER 9TH
- DINER -

ORLEANS



The East Frame

Fletcher Living plans to build almost 960 inner city homes, bringing 2200 people to live and work in the central city. The need to create a bustling, vibrant city neighbourhood is important.

The East Frame will redefine inner city living in Christchurch and provide real choices for people wanting to live central and capture the energy of the re-emerging city. It will be a big step for Christchurch central city.

The East Frame will be a new neighbourhood located in the heart of the city around a large central green space. It will combine residential development with cafes, restaurants and outdoor entertainment areas, presenting the best that inner city living has to offer.

The proximity of the East Frame to the central city will attract a lively mix of people, all captivated by the convenience and opportunity of this thriving community in a premium location.

Living in the East Frame will mean that you are at the heart of the Christchurch transformation as the city grows and develops to take its place as one of the world's most modern cities and cement its place as the centre of the South Island.

Christchurch East Frame Concept



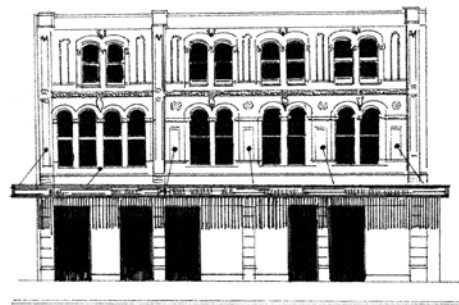


Bonnington House Est. 1883

Stockman Group purchased Bonnington House in July 2006 and commenced a full restoration with Stockman Builders in 2007, for which it received a Christchurch Civic Trust Award.

The sandstone facade was restored and the shop fronts replaced to replicate the originals. A steel and concrete frame was installed inside the structure and the top floors were reconstructed as a range of individually sized modern offices, with shared lounges, boardrooms and kitchen facilities. The ground floor now houses hospitality and fashion Retail.

Bonnington House was designed by architect TS Lambert. The building originally housed Bonnington's Chemist and Black Beattie & Co Drapers. In approximately 1913, Bonnington's Chemist moved to new premises further down the road. The building was then purchased by Strange and Co, which owned both adjacent buildings at the time.



Bonnington's Chemist at 225 High Street





above Bonnington

your space

Designed for the needs of small to medium businesses, Above Your Space Bonnington provides high-quality, contemporary office space in Bonnington House.

The Above Your Space Bonnington offices are in one of three buildings that make up 'Stranges Lane' hospitality hub on the corner of Lichfield and High Streets.

The adjoining Stranges Building and Glendenning Hill Building house a mixture of business, retail and hospitality offerings.

Tenants have access to kitchens, lounges, shared meeting rooms, bathroom and shower facilities, and a mail service.

A range of car-parking options are available close by.



Your Office

Above Your Space Bonnington offers a range of spacious, contemporary offices, stylishly fitted out with designer furniture, flexible shelving, filing units and large desks.

All offices come equipped with heating and access to the latest Fibre Broadband which is provided by the Landlord to tenants at \$60 + GST per month plus a connection fee.

Offices range in size and are suitable for one to five people. They are leased for \$150 – \$460 + GST per week including electricity for the office space.

Your Lounge

For timeout or a quiet chat, Above Your Space Bonnington offers the perfect lounge on each floor. Designed for relaxation, the Above Your Space Bonnington lounges come equipped with smart TVs and relaxed comfortable seating.

It's a perfect space to relax and unwind during your lunch break.

Your Boardroom

Each floor of the Above Your Space Bonnington offices has its own boardroom.

These spaces offer seating for up to eight people and come complete with the latest in smart TV technology, compatible with Windows and Mac. Your presentations will be an enjoyable experience that will keep everyone interested.

The boardrooms are located close to the kitchens so that refreshment needs can be served with ease.



Your Kitchen

Conveniently located on each floor of Above Your Space Bonnington is a fully equipped kitchen space, complete with instant boiling water, a full range of china and cutlery, dish drawers, microwave and fridge.

Some of the larger offices also come with their own kitchen facilities.



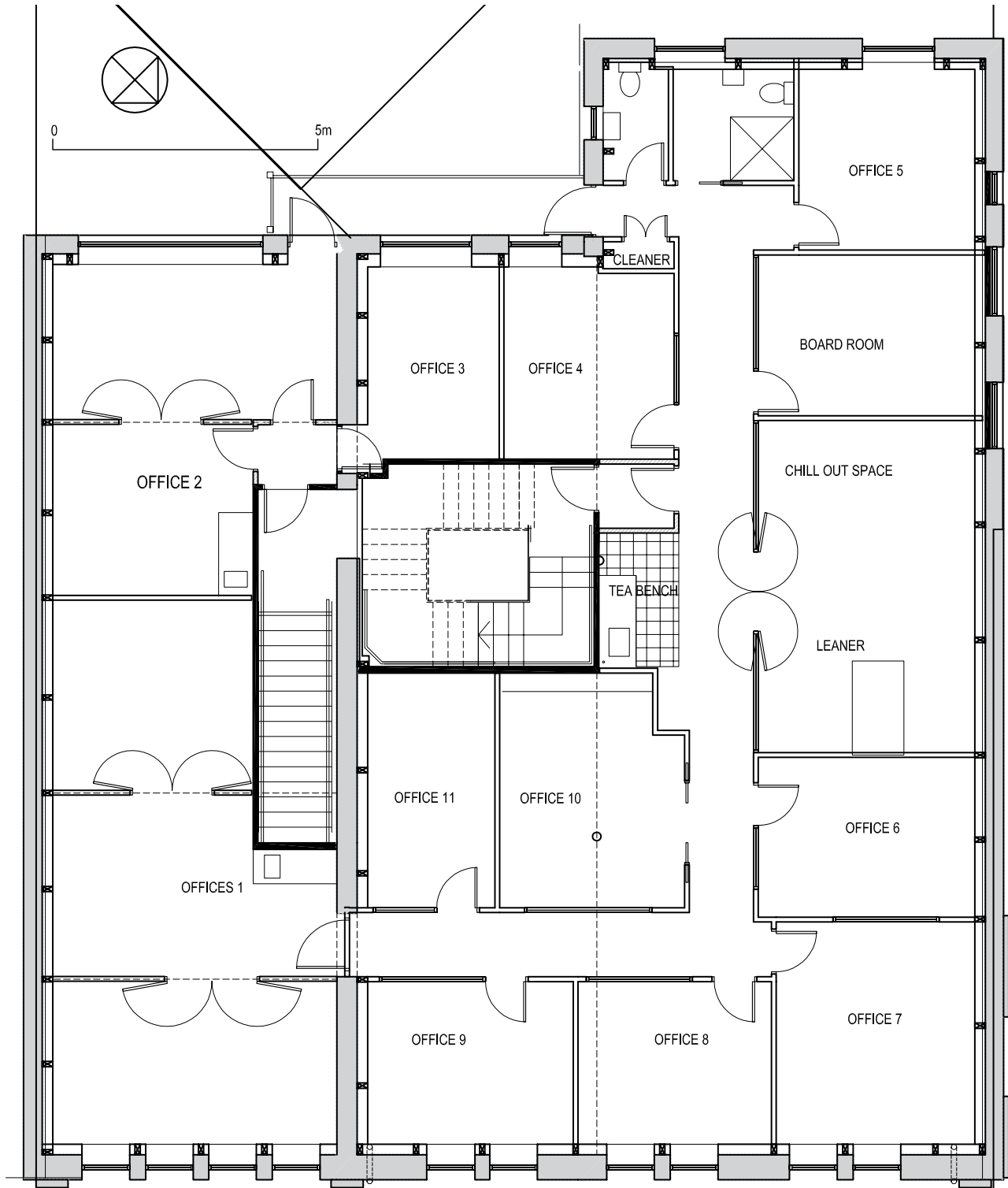
Your rental includes:

- Your electricity
- Rates, insurances and all building services
- Monitored building alarm
- CCTV security system - night patrols
- Tea and coffee
- Photocopier - excludes paper and colour printing
- Mail delivery service
- Bathroom and shower facilities
- Meeting rooms with presentation facilities
- All furniture supplied
- 24 hour access
- Kitchen facilities
- Lounges with TVs
- Full Fibre Broadband - \$60 month + connection fee





Level One – Office Space



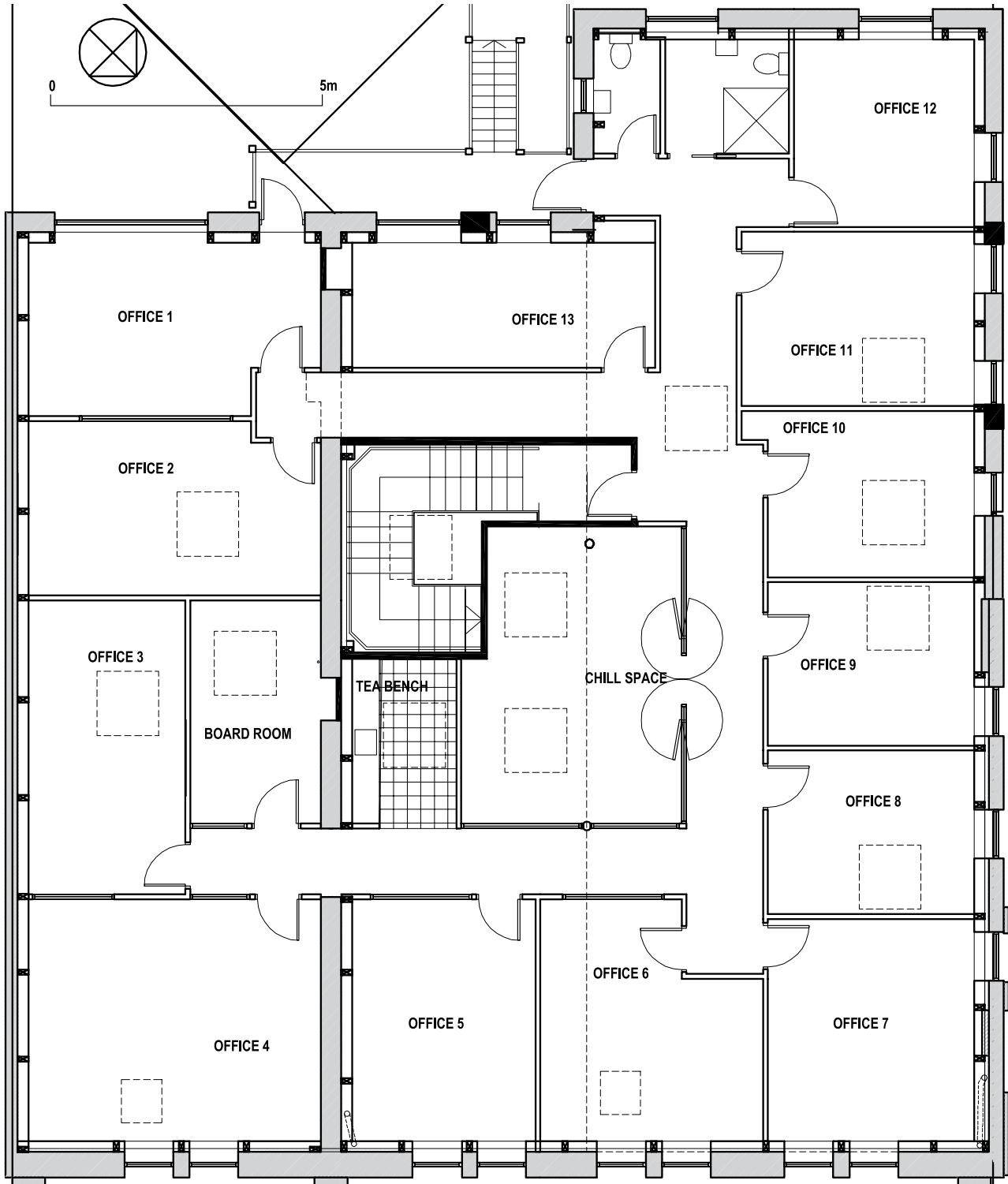
FIRST FLOOR PLAN

1:100

24/8/16



Level Two – Office Space



SECOND FLOOR PLAN

1:100

29/5/08



above
your space

aboveyourspace.co.nz

spaces for people


Stockman
Group Limited